

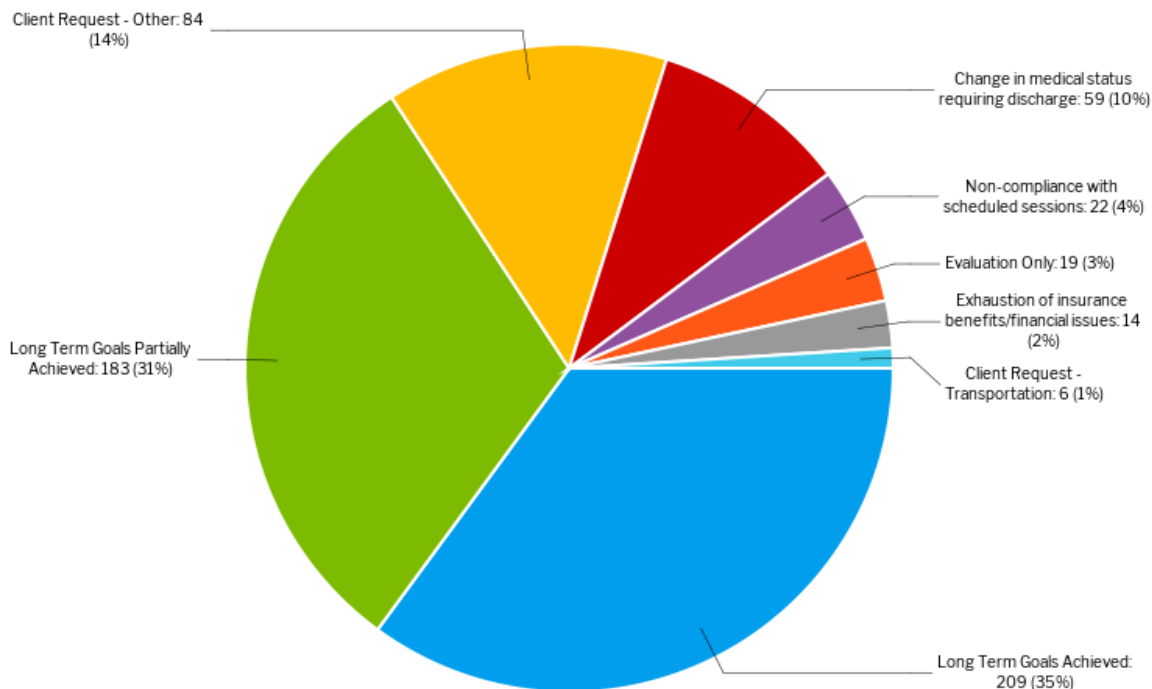
Attention Stakeholders:

In 2024 Life Beyond Barriers Rehabilitation Group (LBBRG) provided therapy services to 2 newborn/infants, 50 toddlers, 74 children, 37 adolescents and 405 adults.

There were 4 unplanned transfers to acute facilities at LBBRG Traverse City and 2 unplanned transfers to acute facilities at LBBRG Rockford. All remaining clients were discharged to their home/community environments. LBBRG work alongside clients and families to address, identify, and define intended discharge environments to promote their greatest level of independence, safety, and quality of life with return to school, work, community (as defined by each client), and home environment. 66% of all clients seen were discharged with long-term goal met or partially met.

Case Count by Discharge Reason

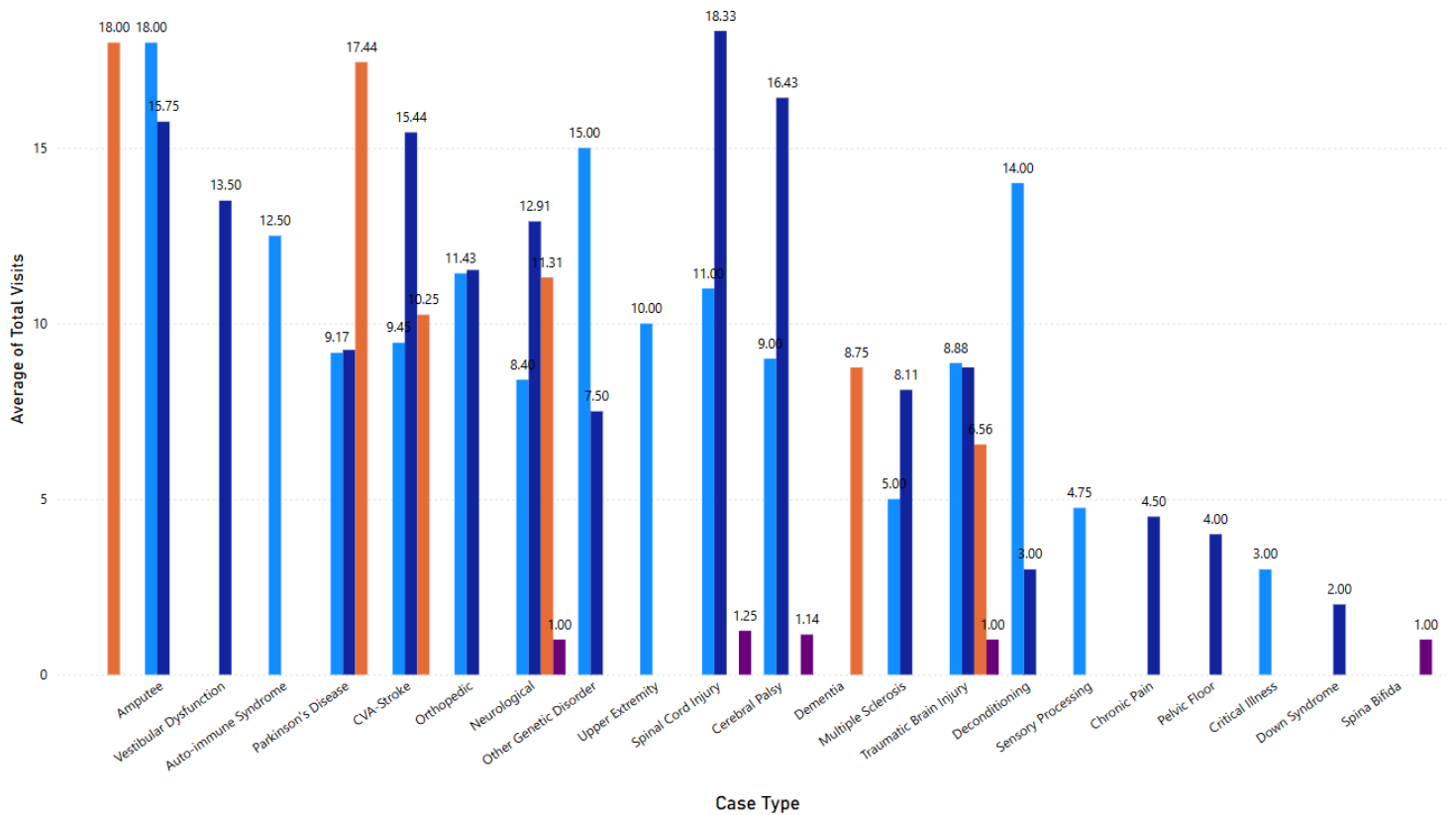
Case View



Below, is the number of clients/cases with medical diagnosis served in 2024, with average visits per case/discipline/clinic.

< Back to report | AVERAGE OF TOTAL VISITS BY CASE TYPE AND PROGRAM: LBBRG TRAVERSE CITY

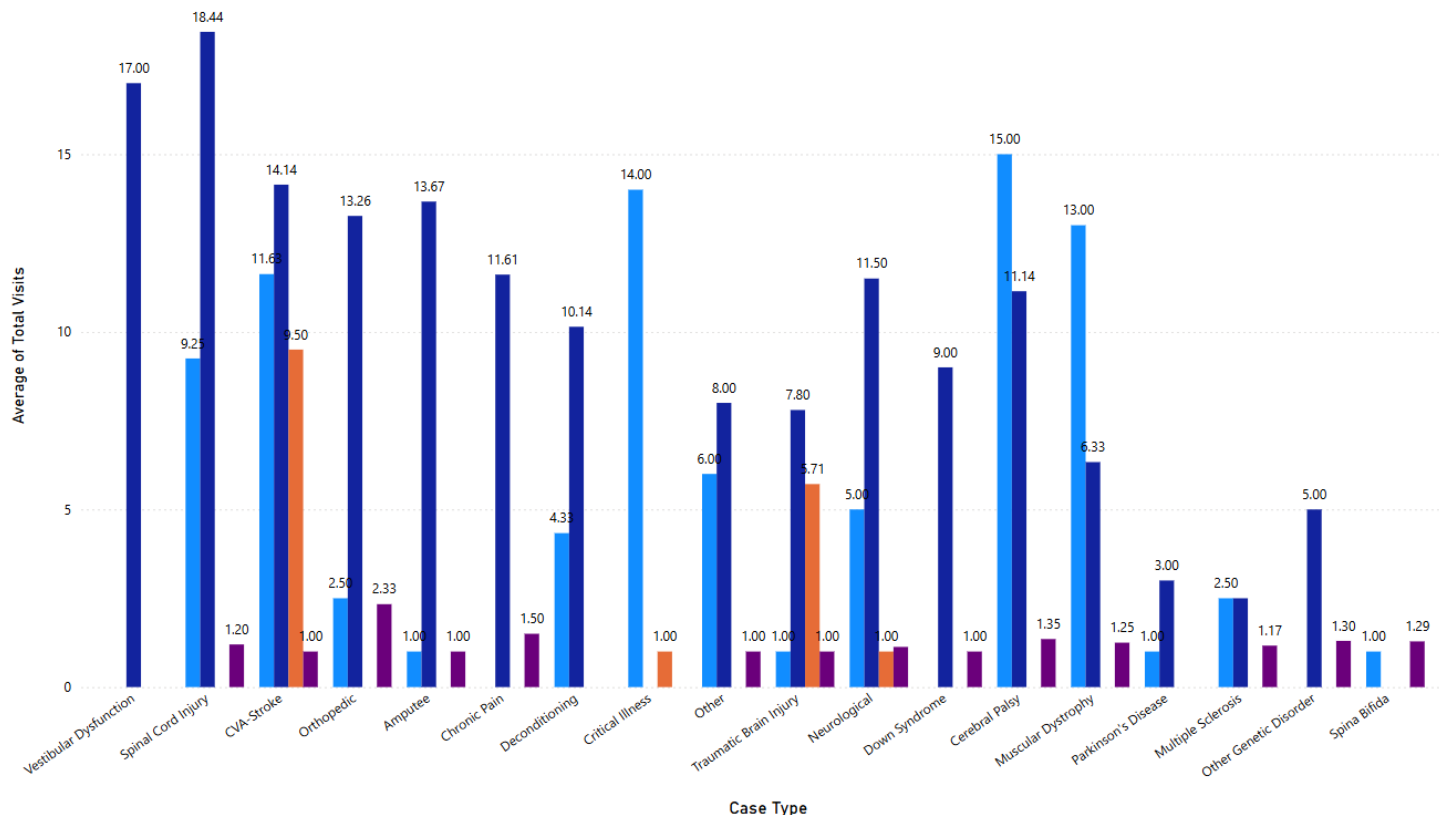
Program ● OT ● PT ● SLP ● Wheelchair/Equipment



< Back to report

AVERAGE OF TOTAL VISITS BY CASE TYPE AND PROGRAM: LBBRG ROCKFORD

Program ● OT ● PT ● SLP ● Wheelchair/Equipment

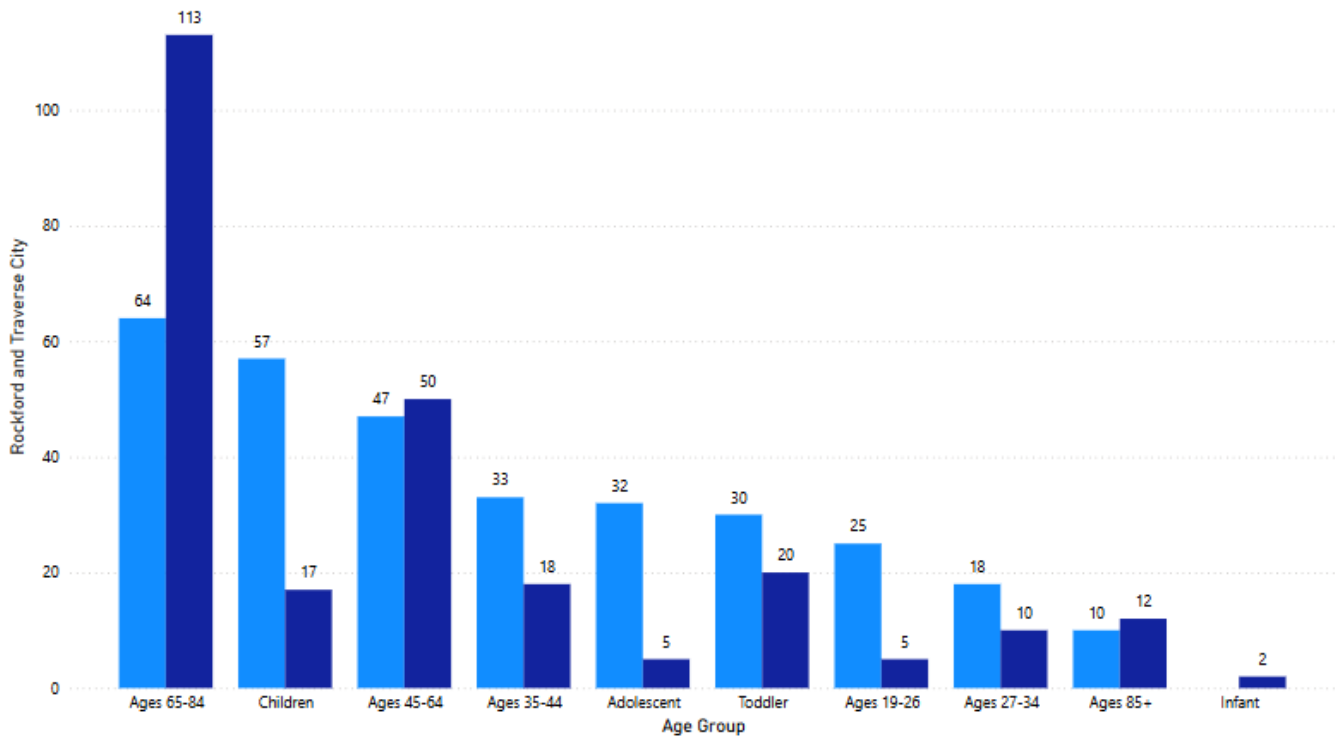


Life Beyond Barriers Rehabilitation Group (LBBRG) in an all-inclusive, diverse environment with universal acceptance, serving qualifying individuals (defined as able to tolerate therapy sessions and are medically stable) of all ages, races, ethnicities, socioeconomic status, abilities, gender/sexual orientation (s), and religion.

In 2024, the person served were of all ages:

Age Groups Serviced in 2024

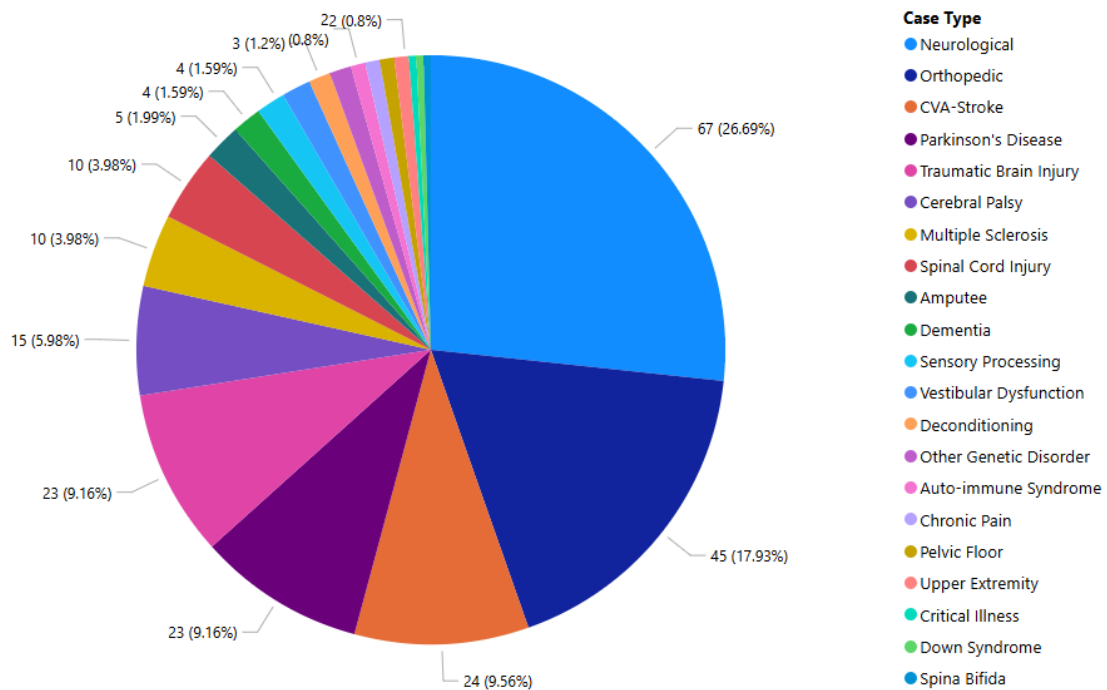
● Rockford ● Traverse City

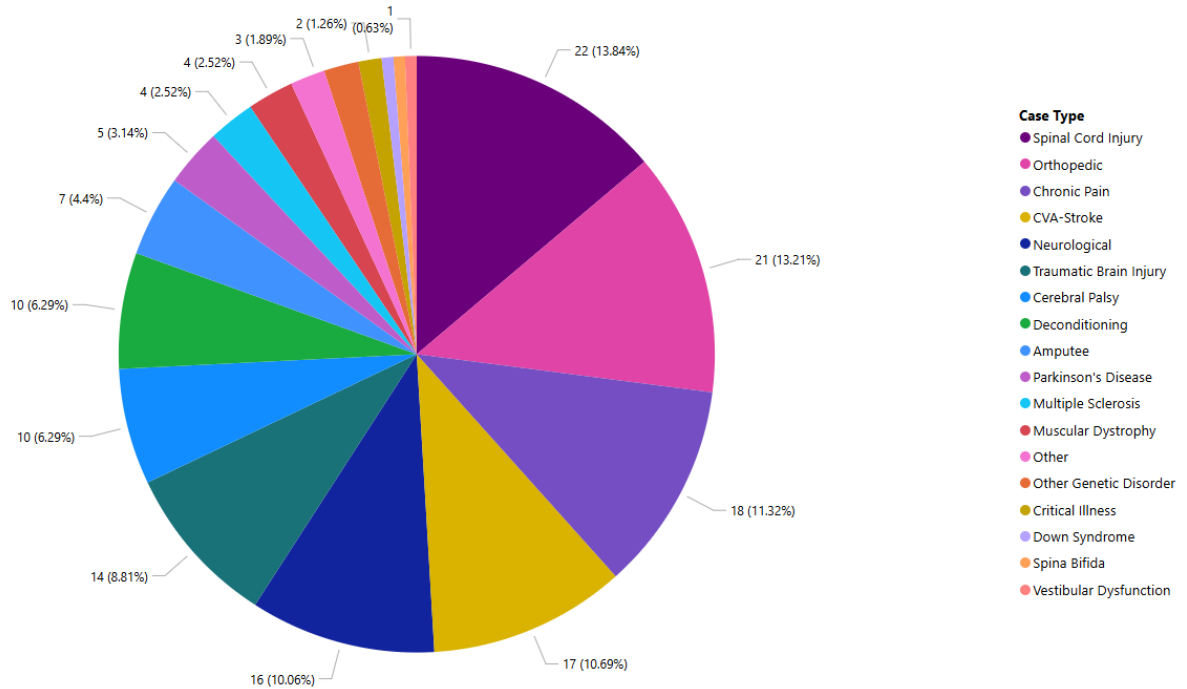


In 2024, many diagnoses were treated:

< Back to report

DIAGNOSES: TRAVERSE CITY





LBBRG requires a physician prescription for services, but accepts referrals from primary care physicians, specialty physicians, case managers, inpatient rehabilitation/hospitals, outpatient therapy centers, home health care, extended care facilities, senior/assisted living facilities, community vendors/resources, and insurers. Delivery mode of services is by referral only.