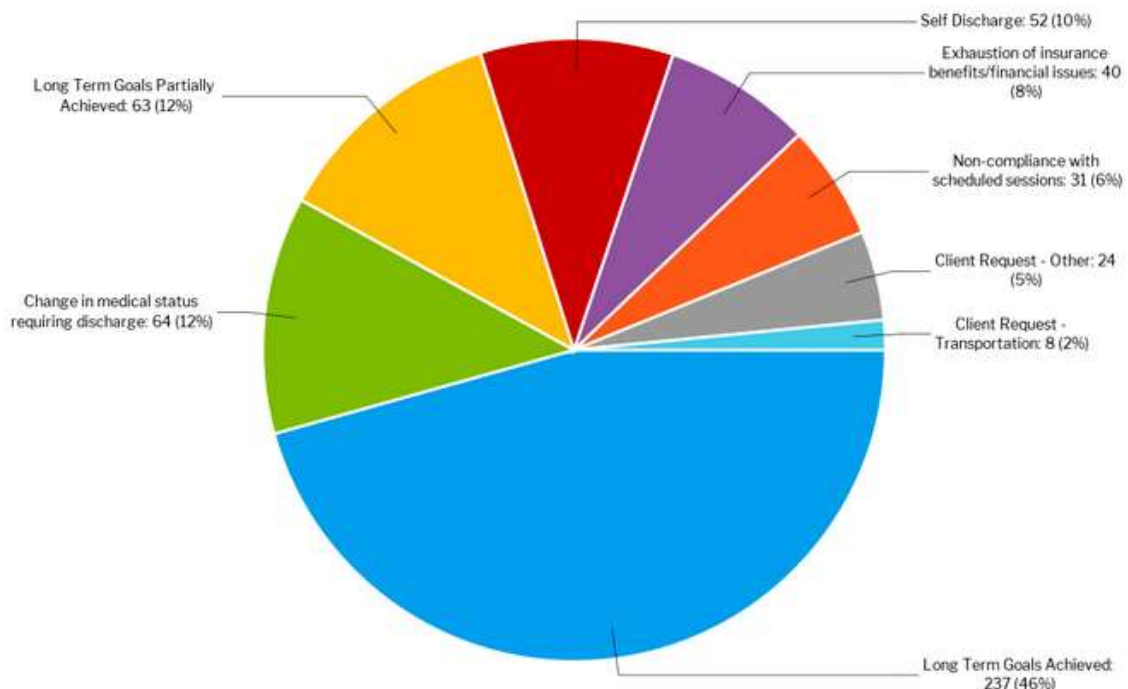




**Attention Stakeholders:**

In 2022, Life Beyond Barriers Rehabilitation Group (LBBRG) provided therapy services to 0 newborn/infant, 16 toddlers, 17 children, 20 adolescents, and 309 adults. LBBRG utilized Focus on Therapeutic Outcomes (FOTO) to track outcome measures. Data is based on six months time, as this was implemented in June of 2022. Data demonstrates that categories Neurological (All), Neurological (CNS), Neurological (PNS), Stroke (UE), Stroke (LE), and Orthopedic (elbow) achieved a functional status change *above* the FOTO predicted functional status change.

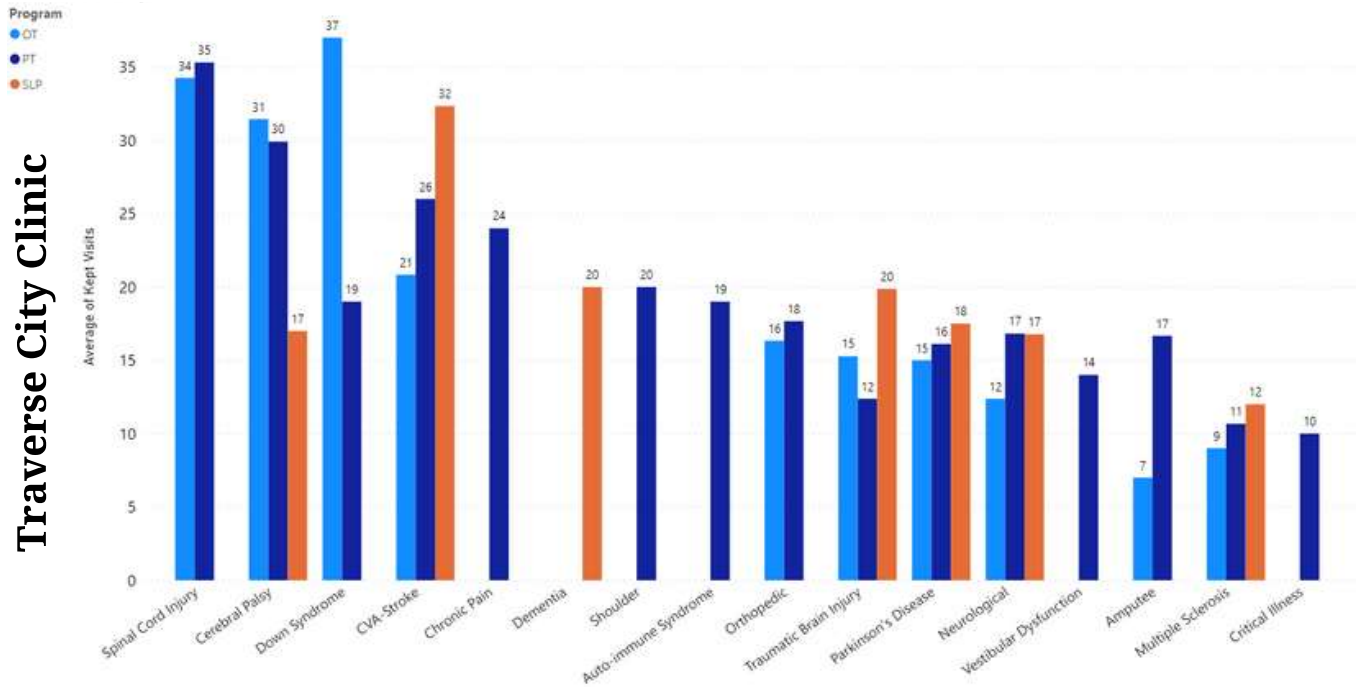
There were no unplanned transfers to acute facilities. Clients were discharged to their home/community environment. LBBRG works with clients and families to address, identify, and define intended discharge environments to promote an enhanced level of function, greatest level of independence, quality of life, and safety, with return to school, work, community (as defined by the client), and home environment. 58% of discharged clients partially/fully met their goals. Below are the reasons upon discharge:



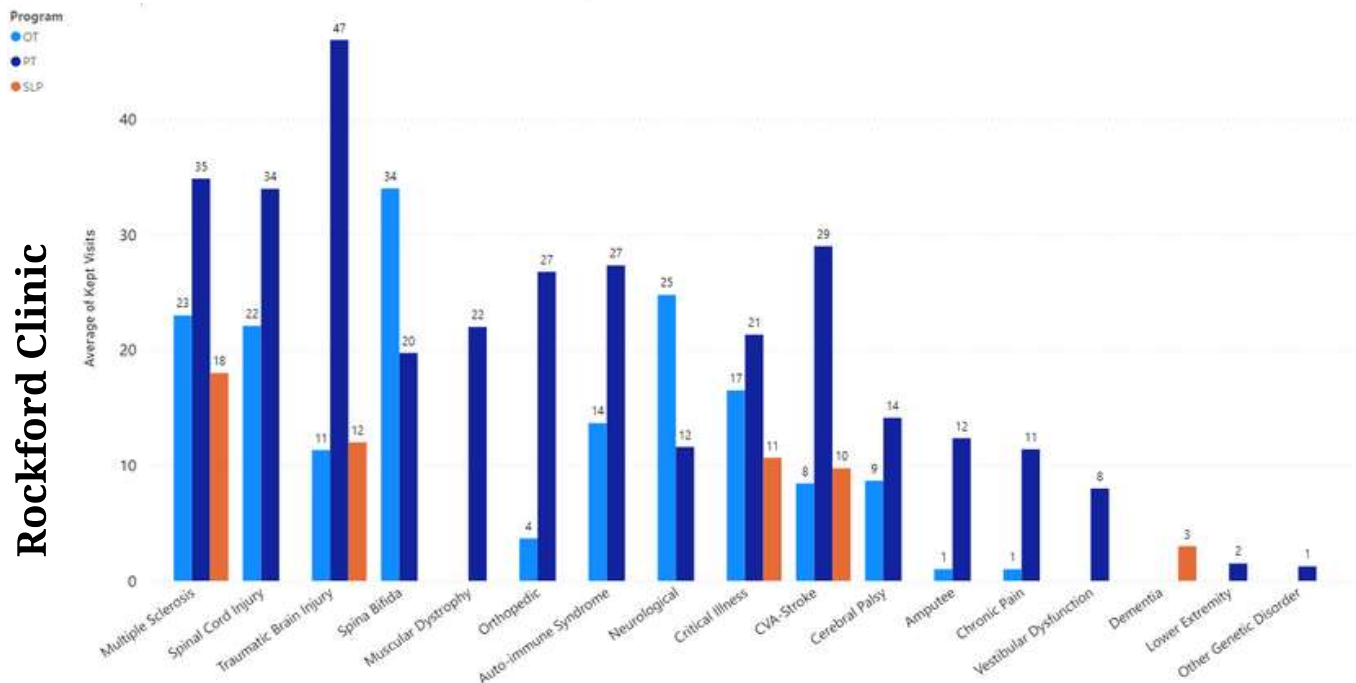
## Attention Stakeholders (continued)

Below, are the medical diagnoses served in 2022, with average visits per case/discipline/clinic.

### Traverse City Clinic



### Rockford Clinic

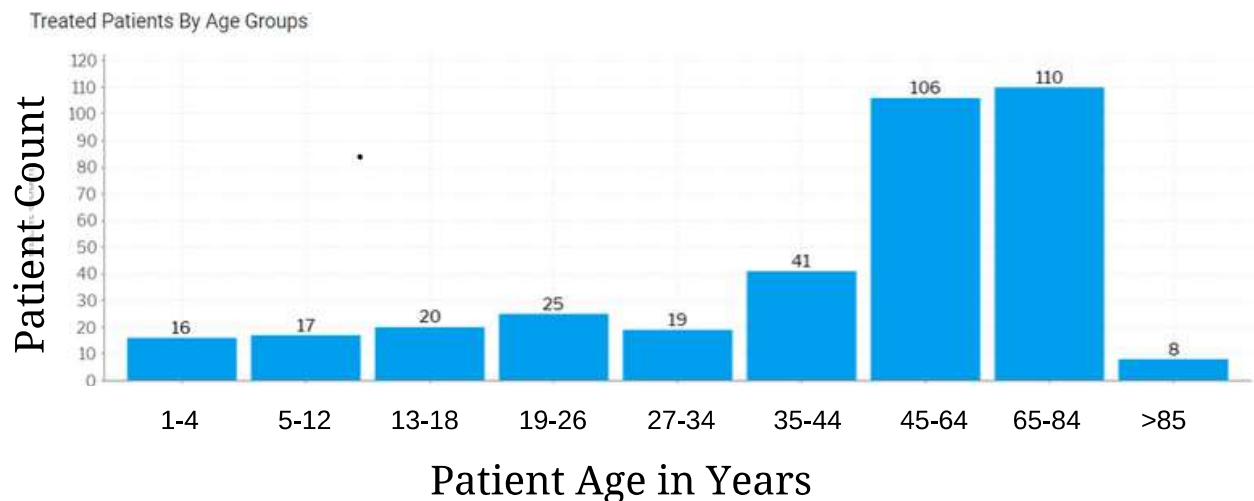




## Attention Stakeholders (continued)

Life Beyond Barriers Rehabilitation Group (LBBRG) is an all-inclusive environment with universal acceptance, serving qualifying individuals (defined as able to tolerate therapy and medically stable) of all ages, races, ethnicities, socioeconomic status, abilities, gender/sexual orientation(s), religion.

In 2022, the persons served were of all ages:



LBBRG requires a physician prescription for services, but accepts referrals from primary care physicians, specialty physicians, case managers, inpatient rehabilitation/hospital, outpatient therapy, home care, extended care facilities, senior/assisted living, vendors, community resources, attorneys, and insurers. Delivery mode of services is by referral only.

For 2022, Net Promoter Score (NPS) was 94.9 and therapy value was rated 4.9/5.0 by clients. A stakeholder survey revealed an NPS of 93.

Per FOTO satisfaction survey, all clients taking the survey were 100% satisfied with their treatment for their condition and all felt they had 100% input on their goals.